



## QUICK START GUIDE

# BAR 5.0 MULTIBEAM™

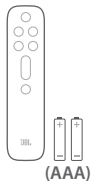






**EN** Before using this product, read the safety sheet carefully.

**ZH-CN** 使用本产品前, 请仔细阅读安全说明书。



(AAA)



x 2



x 2

x 2



x 2

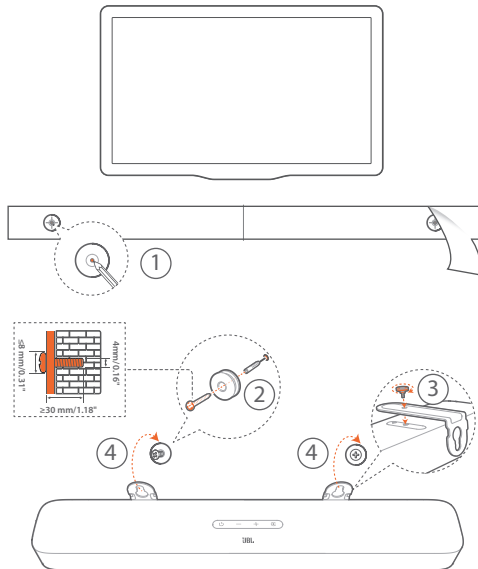
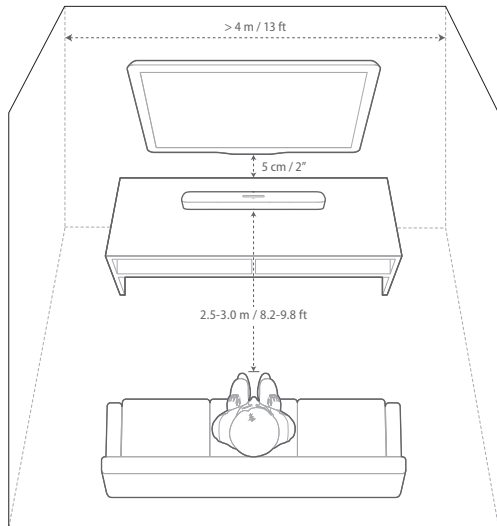


x 2



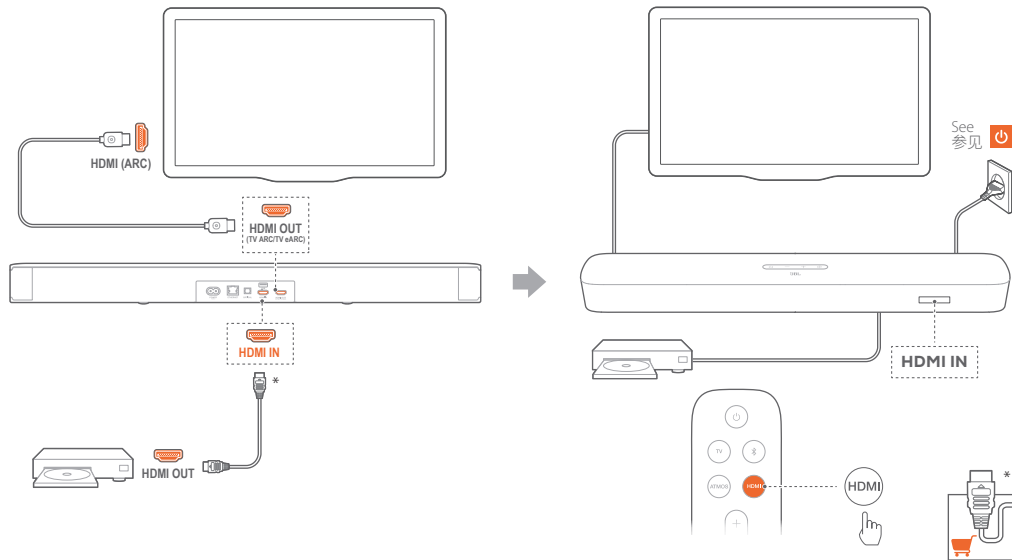
**EN** \*Power cord quantity and plug type vary by regions.

**ZH-CN** \*电源线数量和插头类型因区域而异。



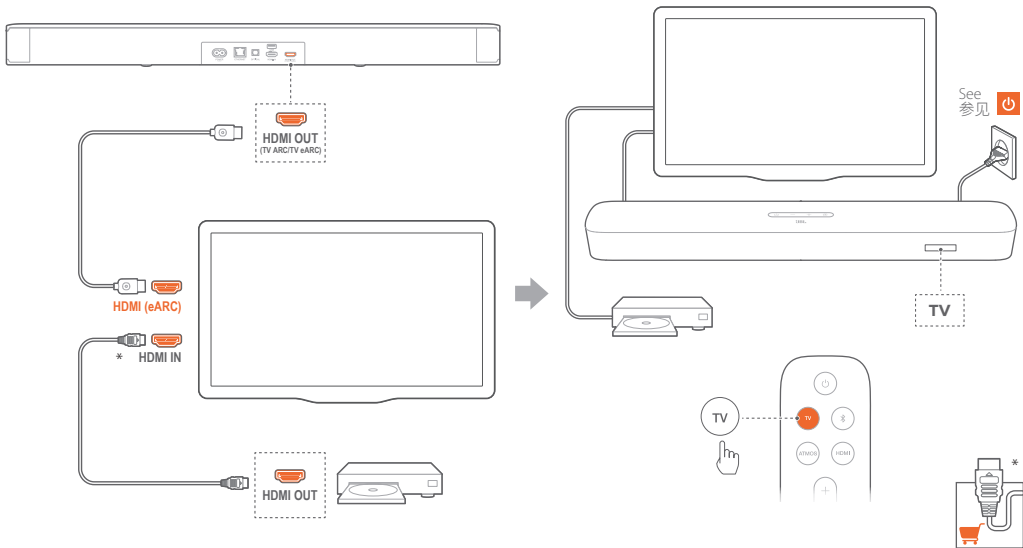


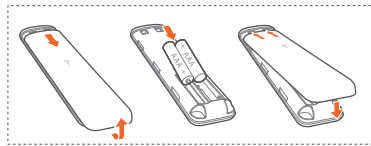
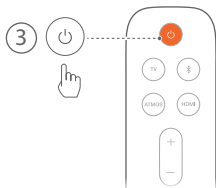
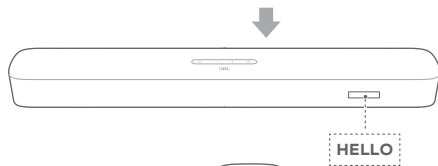
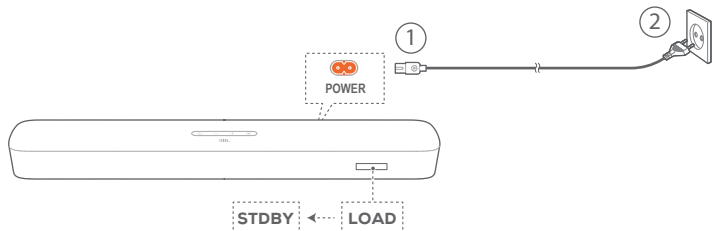
## TV (HDMI ARC)

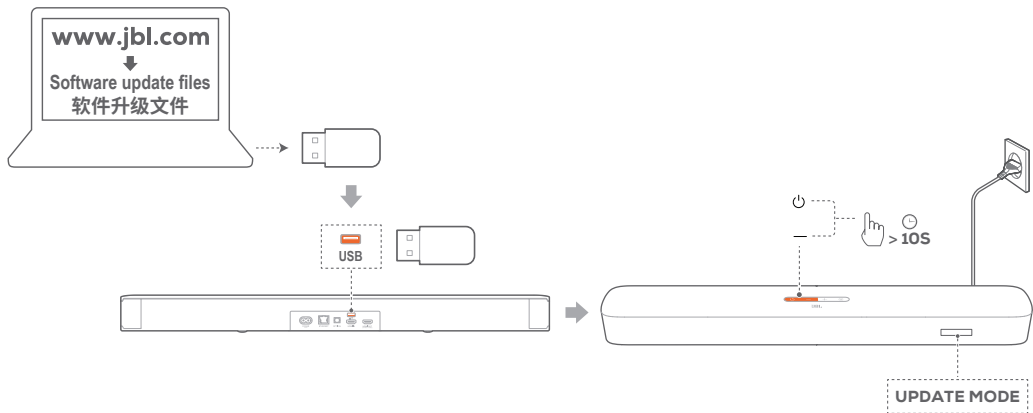




## TV (HDMI eARC)



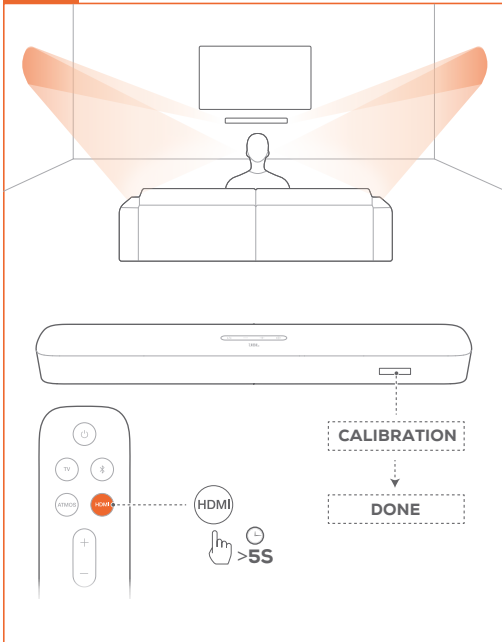




**EN** For software upgrade.

**ZH-CN** 用于软件升级。





EN

#### Automatic MultiBeam Calibration

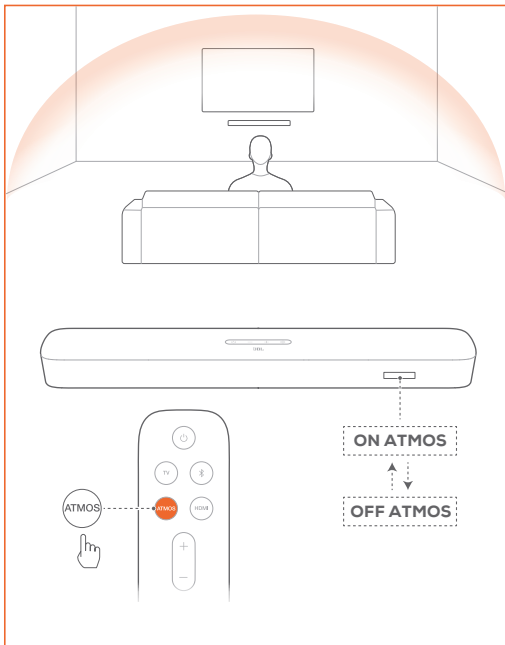
With Automatic MultiBeam Calibration (AMC), your surround sound experience can be optimized for your favorite seating position.

ZH-CN

#### MultiBeam 自动校准

借助MultiBeam 自动校准 (Automatic MultiBeam™ Calibration, AMC), 您可基于您所偏好的聆听位置优化您的环绕声体验。

# DOLBY ATMOS® (VIRTUAL)



EN

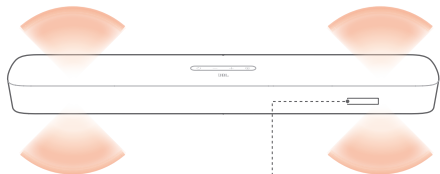
## DOLBY ATMOS® (Virtual)

With the Virtual Dolby Atmos, enjoy height sound effects when you play movies in the TV/HDMI IN source (See the  chapter).

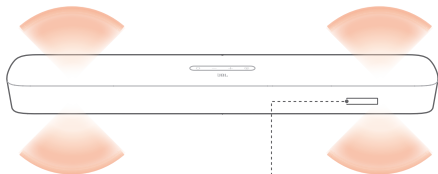
ZH-CN

## DOLBY ATMOS® (虚拟)

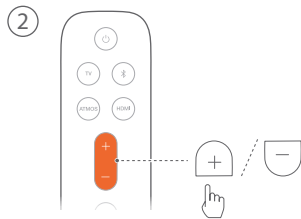
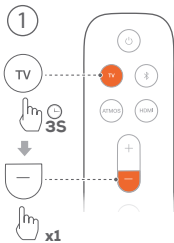
借助虚拟杜比全景声 (DOLBY ATMOS)，您可在观看影片时享受置顶音效 (须通过TV/HDMI IN音源播放，参见  一章中的连接和播放方式)。

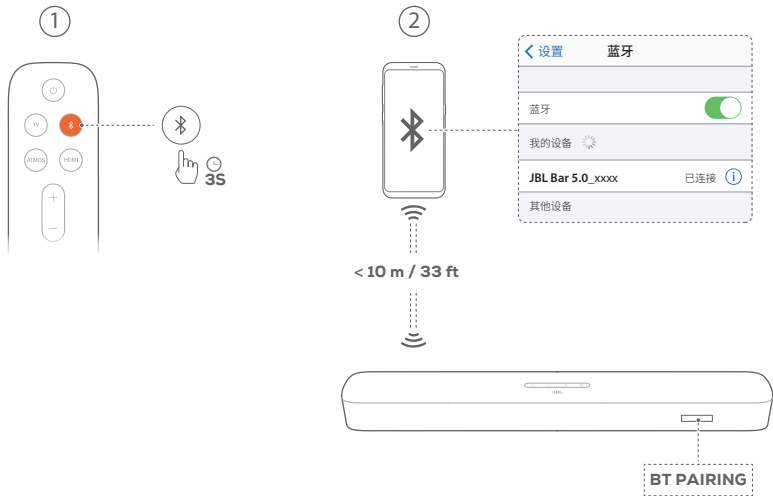


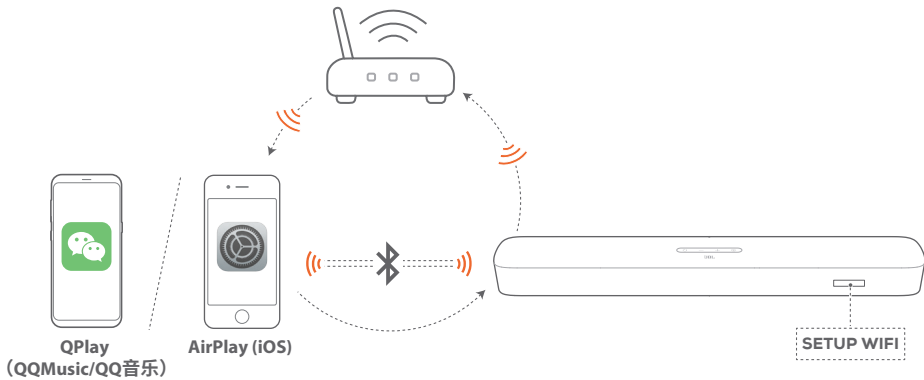
LVL 3



LVL 1 ↔ LVL 2 ↔ LVL 3 ↔ LVL 4 ↔ LVL 5









# QPLAY



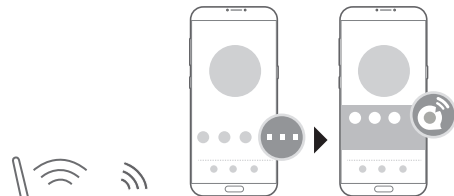
Android / iOS device  
安卓或 iOS 设备



QPLAY READY ← SETUP WIFI

**EN** Add the soundbar to your home Wi-Fi network: Launch the WeChat app on your mobile phone and then scan the above QR code, or search for the Mini Program “JBL家用音响设置”. Follow the onscreen instructions to complete setup.

**ZH-CN** 将条形音箱接入您的家庭无线 Wi-Fi 网络: 在手机上开启微信, 然后扫描二维码或搜索小程序“JBL家用音响设置”。按照屏幕提示完成设置。



Android / iOS device  
安卓或 iOS 设备



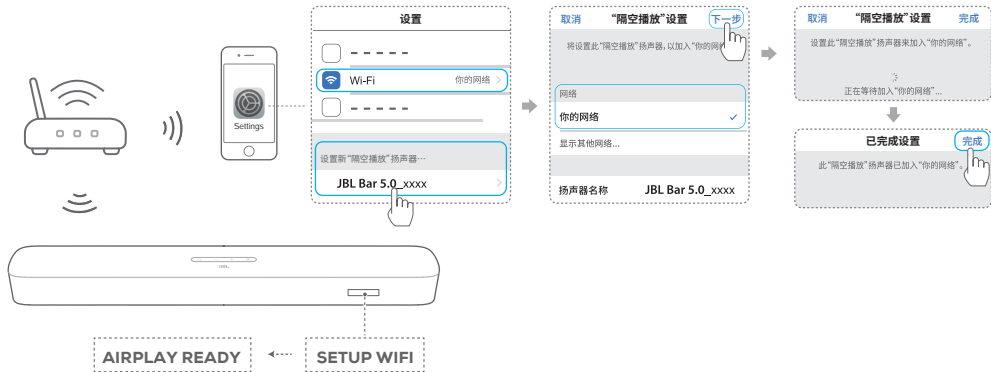
QPLAY

**EN** Stream music from QQMusic to the soundbar: Launch the QQMusic app on your mobile phone, and start music playback. On the player screen, tap ... and then the QPlay icon on the pop-up screen to select “JBL Bar 5.0\_xxxx” as speaker.

**ZH-CN** 通过QQ音乐将音乐播放传输至条形音箱: 在手机上开启QQ音乐, 开启音乐曲目播放。在播放屏幕, 点击..., 然后在弹出界面中点击QPlay图标, 选择“JBL Bar 5.0\_xxxx”为播放扬声器。



## AirPlay (iOS)



EN

For AirPlay only users, skip the WeChat Mini Program “JBL家用音响设置”. On an iOS device, add the soundbar to your home Wi-Fi network through the AirPlay speaker setup. Follow the onscreen instructions to complete setup.

ZH-CN

对于仅使用AirPlay的用户，无需安装微信小程序“JBL家用音响设置”。在iOS设备上，选择设置 > Wi-Fi，在设置新“隔空播放”扬声器下选择“JBL Bar 5.0\_xxxx”。按屏幕提示完成设置。

## EN

### General specification:

- Model: BAR 5.0 MULTIBEAM  
Power supply: 100 - 240 V AC,  
~ 50/60 Hz
- Total speaker power output  
(Max. @THD 1%): 250 W
- Soundbar output power  
(Max. @THD 1%): 5 x 50 W
- Soundbar transducer:  
5 x 48mm x 80mm racetrack drivers  
(3 front facing and two side firing) +  
4 x 3" (75mm) Passive Radiators
- Networked standby power: <2.0W
- Operating temperature: 0°C - 45°C

### HDMI specification:

- HDMI Video input: 1
- HDMI Video output (With Enhanced  
Audio Return Channel, eARC): 1
- HDMI HDCP version: 2.3

### Audio specification:

- Frequency response: 50Hz - 20KHz
- Audio inputs: 1 Optical, Bluetooth

### USB specification:

- USB port: Type A
- USB rating: 5V DC, 0.5A

### Wireless specification:

- Bluetooth version: 4.2

- Bluetooth profile: A2DP V1.2, AVRCP V1.5
  - Bluetooth frequency range:  
2400 - 2483.5 MHz
  - Bluetooth transmitter power:  
<10 dBm (EIRP)
  - Wi-Fi network:  
IEEE 802.11 a/b/g/n/ac (2.4GHz/5GHz)
  - 2.4G Wi-Fi frequency range:  
2412 - 2472 MHz (2.4GHz ISM Band,  
USA and Canada 11 Channels, Europe  
and others 13 Channels)
  - 2.4G Wi-Fi transmitter power:  
< 20 dBm (EIRP)
  - 5G Wi-Fi frequency range:  
5.15 - 5.35 GHz, 5.725 - 5.825 GHz
  - 5G Wi-Fi transmitter power:  
< 23 dBm (EIRP)
- ### Dimensions:
- Dimensions (W x H x D):  
709 x 58 x 101 mm / 27.9" x 2.3" x 3.9"
  - Weight: 2.8 Kg
  - Packaging dimensions (W x H x D):  
966 x 126 x 161 mm / 38.0" x 4.9" x 6.3"
  - Packaging weight (Gross weight): 4.5 Kg

## ZH-CN

### 一般规格:

- 型号: BAR 5.0 MULTIBEAM
- 电源: 100 - 240 V AC, ~ 50/60 Hz
- 扬声器总输出功率 (THD为1%时的  
最大值): 250 W
- 条形音箱输出功率 (THD为1%时的  
最大值): 5 x 50 W
- 主条形音箱转换器: 5个 48mm x  
80mm racetrack 驱动单元 +  
4个 3英寸 (75mm) 无源辐射器
- 联网待机功耗: <2.0W
- 工作温度: 0°C - 45°C

### HDMI规格:

- HDMI 视频输入: 1
- HDMI 视频输出 (带增强音频回传通  
道, eARC): 1
- HDMI HDCP 版本: 2.3

### 音频规格:

- 频率响应: 50Hz - 20KHz
- 音频输入:  
1个光纤接口、蓝牙

### USB 规格:

- USB 接口: A型
- USB 额定值: 5 V DC, 0.5A

### 无线规格:

- 蓝牙版本: 4.2

- 蓝牙配置文件:  
A2DP V1.2、AVRCP V1.5
- 蓝牙频率范围:  
2400 MHz - 2483.5 MHz
- 蓝牙传输功率: <10 dBm (EIRP)
- Wi-Fi 网络: IEEE 802.11 a/b/g/n/ac  
(2.4GHz/5GHz)
- 2.4G Wi-Fi 频率范围:  
2412 - 2472 MHz (2.4GHz ISM 频带、  
美国及加拿大11个频道、欧洲和其它  
国家和地区13个频道)
- 2.4G Wi-Fi 传输功率: <20 dBm (EIRP)
- 5G Wi-Fi 频率范围:  
5.15 - 5.35 GHz, 5.725 - 5.825 GHz
- 5G Wi-Fi 传输功率: <23 dBm (EIRP)

### 尺寸:

- 尺寸 (宽 x 高 x 厚):  
709 x 58 x 101 mm /  
27.9 x 2.3 x 3.9 英寸
- 重量: 2.8 Kg
- 包装尺寸 (宽 x 高 x 厚):  
966 x 126 x 161 mm /  
38.0 x 4.9 x 6.3 英寸
- 包装重量 (毛重): 4.5 Kg



This product contains open source software licensed under GPL. For your convenience, the source code and relevant build instruction are also available at [https://harman-webpages.s3.amazonaws.com/jbl\\_bar5.0\\_package\\_license\\_list.htm](https://harman-webpages.s3.amazonaws.com/jbl_bar5.0_package_license_list.htm). Please feel free to contact us at:

Harman Deutschland GmbH

ATT: Open Source, Gregor Krapf-Gunther, Parkring 3

85748 Garching bei Munchen, Germany

or [OpenSourceSupport@Harman.com](mailto:OpenSourceSupport@Harman.com) if you have additional question regarding the open source software in the product.



The Bluetooth® word mark and logos are registered trademarks owned by Bluetooth SIG, Inc. and any use of such marks by HARMAN International Industries, Incorporated is under license. Other trademarks and trade names are those of their respective owners.



The terms HDMI, HDMI High-Definition Multimedia Interface, and the HDMI Logo are trademarks or registered trademarks of HDMI Licensing Administrator, Inc.



The Wi-Fi CERTIFIED™ Logo is a certification mark of the Wi-Fi Alliance®.

COMPATIBLE WITH



Dolby, Dolby Vision, Dolby Atmos, and the double-D symbol are registered trademarks of Dolby Laboratories Licensing Corporation. Manufactured under license from Dolby Laboratories. Confidential unpublished works. Copyright © 2012–2020 Dolby Laboratories. All rights reserved.



Apple, AirPlay, iPad, iPad Air, iPad Pro, and iPhone are trademarks of Apple Inc., registered in the U.S. and other countries.

Use of the Works with Apple badge means that an accessory has been designed to work specifically with the technology identified in the badge and has been certified by the developer to meet Apple performance standards. To control this AirPlay 2-enabled speaker, iOS 11.4 or later is required.

QQ 音乐是本音响的内容合作伙伴腾讯公司的商业标识或版权形象。



